





## GROWING EXPERTISE – A STRONG GROUP

Today GRIFFON & ROMANO S.p.A. is a part of the multinational Slovenian Steel Group (SIJ), which is made up of 20 companies across the globe. It leads the domestic market in the production and sale of stainless steel.



## SUCCESS MADE IN ITALY

GRIFFON & ROMANO S.p.A. was founded in 1954. Since then it has developed into a major service center in the Italian stainless steel industry.

Our headquarters is in Melzo (Milan) where we have sales offices and a factory. We also have a second factory in Corte Tegge (Reggio Emilia) and commercial agents throughout Italy who have been supporting our customers for over 60 years. We are one of the biggest INOX steel service centers in Italy and we have relationships with customers in Austria, France, Spain, Russia and Israel among others. Our customers come from a wide variety of industrial sectors including food and food processing, pharmaceutical, packaging, textile, chemical and petrochemical, engineering, paper, shipbuilding, water treatment, nuclear, etc.

Our main strength is the ability to produce sheet metal in a variety of sizes up to 130 mm thickness by 2500 mm wide. We use high definition plasma, waterjet and saw cutting technology to produce customized stainless steel between 1500 and 2500 mm wide, with thickness from 3 to 130 mm.

The wide range of stainless steel (3500 t) and complementary products on stock (304, 304L, 304H, 316, 316L, 316Ti, 321, 321H, 347, 347H, 310S, 31803, 32750) ensures fast delivery of all products. This, along with our high cutting quality, are the features most appreciated by our customers.

STEEL GRADES SIJ	SIJ DESIGNATION	W.NR. NUMBER	DESIGNATION AISI/ASTM	DESIGNATION EN	DESIGNATION GOST	QUARTO PLATES
AUSTENITIC	SINOXX 4301	1.4301	304	X5CrNi18-10	12X18H9	•
	SINOXX 4307	1.4307	304L	X2CrNi18-9	04X18H10	•
	SINOXX 4541	1.4541	321	X6CrNiTi18-10	08X18H10T	•
	SINOXX 4550	1.4550	347 / 347 H	X6CrNiNb18-10	08X18H12B	•
	SINOXX 4878	1.4878	321H	X8CrNiTi18-10	12X18H10T	•
	SINOXX 4948	1.4948	304H	X6CrNi18-10		•
AUSTENITIC WITH MO	SINOXX 4401	1.4401	316	X5CrNiMo17-12-2		•
	SINOXX 4404	1.4404	316L	X2CrNiMo17-12-2		•
	SINOXX 4571	1.4571	316Ti	X6CrNiMoTi17-12-2	10X17H13M2T	•
	SINOXX 5471	1.4438	317L	X2CrNiMo18-15-2		•
HEAT RESISTANT AUSTENITIC	SINOXX 4845	1.4845	310/310S/310H	X8CrNi25-21		•
FERRITIC OR MARTENSITIC	SINOXX 4016	1.4016	430	X6Cr17		•
	SINOXX 4313	1.4313	415	X3CrNiMo13-4		•
DUPLEX / SUPERDUPLEX	SINOXX 4462	1.4462	2205	X2CrNiMoN22-5-3	03X22H5AM3	•
	SINOXX 4410	1.4410	2507	X2CrNiMoN25-7-4		•

The complete list of grades available from the steel mill can be found on the site [www.sij.si](http://www.sij.si).  
Alternatively, contact our sales office [info@griffon-romano.it](mailto:info@griffon-romano.it)



## PLASMA CUTTING



SIJ | Griffon & Romano's latest generation plasma-cutting machinery sets new possibilities to satisfy our customers in the field of stainless steel service. It combines the latest developments in high definition and control technology and provides flexibility of productivity, allowing extraordinary precision cutting for steel plates of large dimensions in heavy-duty production environments.

The systems allow cutting up to a thickness of 150 mm, with cutting benches for sheets of 3 m per 12 m. The HD plasma cutting offers a straight cut up to a thickness of about 60 mm, which becomes more and more concave as it approaches the maximum workable thickness (150 mm). However, the high definition makes it possible to reduce the concavity of the cut to a few millimeters, not requiring excessive oversizes. We also realize mechanical bevel cutting on large metal sheet plates, which simplifies further welding and mechanical treatments for tubes and fittings producers.





## WATER JET CUTTING



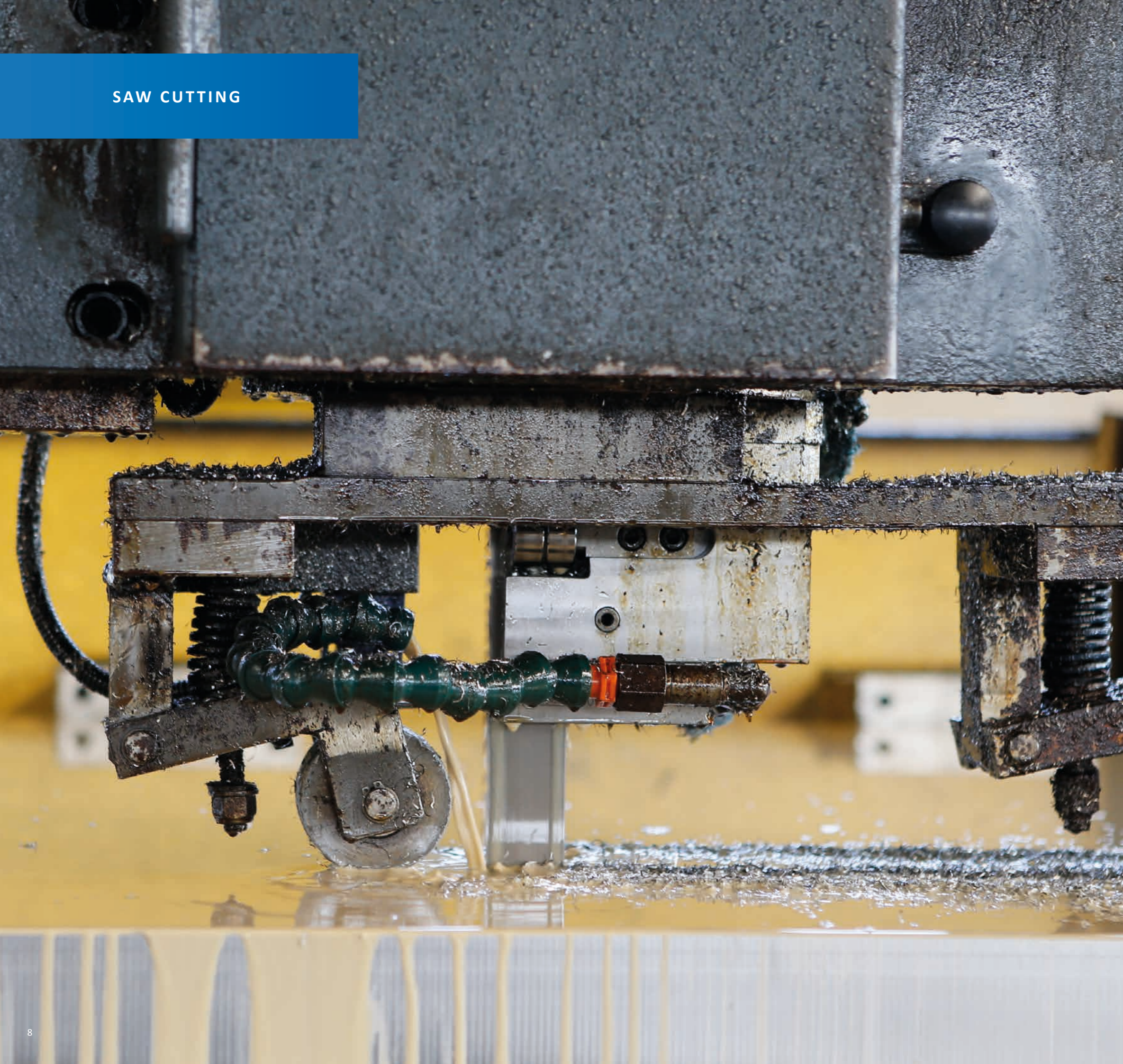
The material is cut by using high-pressure jet of water and abrasives that permit not to alter the chemical-physical characteristics of the material.

The result is an excellent quality cut which often avoids further machining. The machine consists of two benches that allows to cut the material up to 150 mm thickness, with maximum dimensions of 2000 × 8000mm.



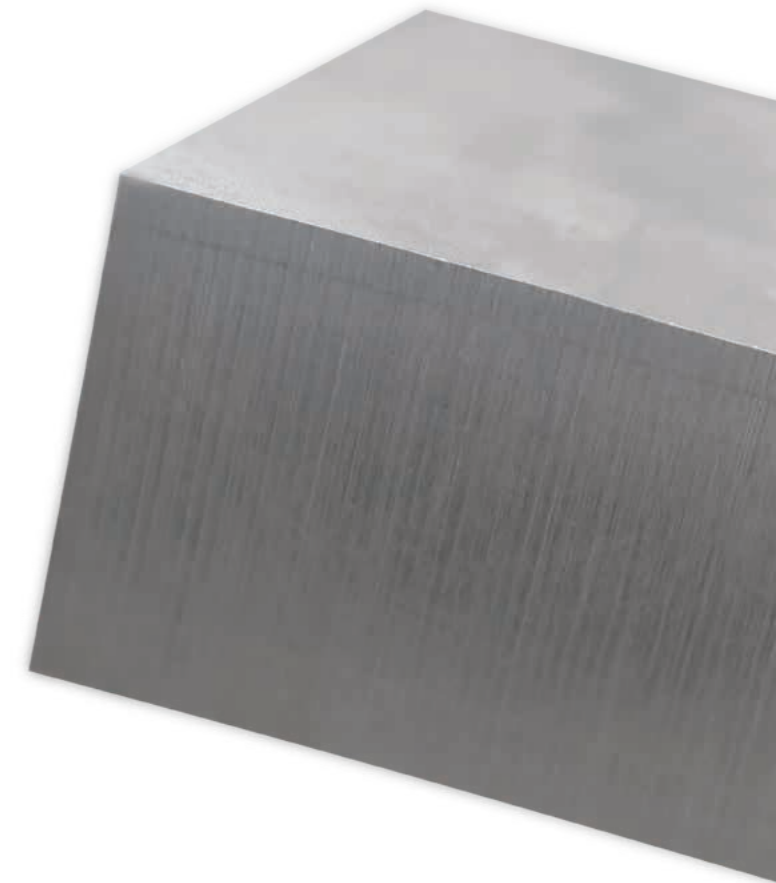


## SAW CUTTING



Saw cutting is the solution for machining medium and large thicknesses from 8 mm and higher.

This technology ensures a perfect straight-angle cut with a high finish and minimizes alteration of the mechanical characteristics of the material. We cut the material with thickness up to 250 mm on the bench of 2,5m × 8 m. The plates are straightened upon request after cutting.





## ADDITIONAL FEATURES



Production of finished products for further machining, such as:

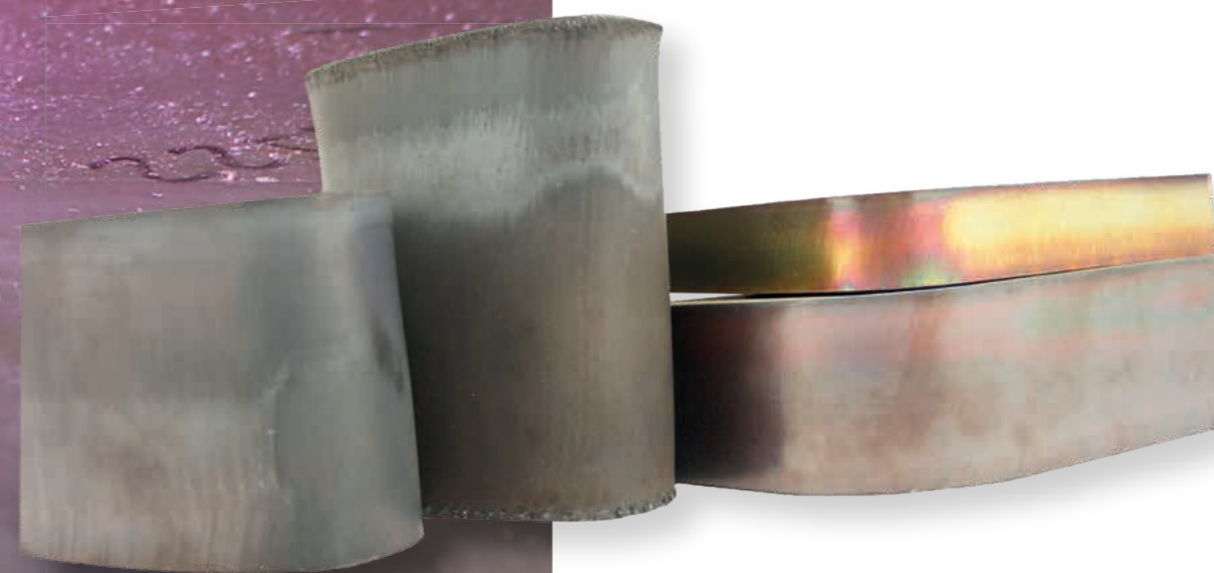
- Flanges
- Tube plates
- Welded and bended rings

### DEBURRING

To avoid the cost of subsequent machining to the customer, the cut pieces are automatically deburred. The final step is electronic weighing of the product.

### STRAIGHTENING

We straighten bars, sheets and cut items. In order to reduce the extra metal. Griffon & Romano is able to offer the best planarity obtainable among the different characteristics of the product and its thickness. Explanations in this regard will be well received by our technical office.





## STAINLESS STEEL STANDARDS

### SPECIFICATIONS APPLICABLE TO THE MATERIAL

<b>EN 10088-1</b>	Stainless steels — Part 1: List of stainless steels
<b>EN 10088-2</b>	Stainless steels — Part 2: Technical delivery conditions for sheet/plate and strip of corrosion resisting steels for general purposes
<b>EN 10088-4</b>	Stainless steels — Part 4: Technical delivery conditions for sheet/plate and strip of corrosion resisting steels for construction purposes
<b>EN 10028-7</b>	Flat products made of steels for pressure purposes — Part 7: Stainless steels
<b>EN 10095</b>	Heat resisting steels and nickel alloys
<b>AD 2000 W0-2-10</b>	Metallic materials intended for use of components and parts subject to pressure
<b>ASTM A240/A 240M</b>	Standard Specification for Chromium and Chromium-Nickel Stainless Steel Plate, Sheet, and Strip for Pressure Vessels and for General Applications
<b>ASTM A167</b>	Standard Specification for Stainless and Heat-Resisting Chromium-Nickel Steel Plate, Sheet, and Strip
<b>NORSOK M-630 M-650</b>	Qualification of producers of special materials - technical data sheets of materials and elements for pipelines
<b>ASME SA 240M</b>	Specification for Chromium and Chromium-Nickel Stainless Steel Plate, Sheet and Strip for pressure vessels and for General Applications

### TOLERANCES ON DIMENSIONS AND SHAPE

<b>ASTM A480/A 480M</b>	Standard Specification for General Requirements for Flat-Rolled Stainless and Heat-Resisting Steel Plate, Sheet, and Strip
<b>EN ISO 18286</b>	Hot rolled Stainless steel plates — Tolerances on dimensions and shape

### CORROSION RESISTANCE OF STEEL

<b>EN ISO 3651-1</b>	Determination of resistance to intergranular corrosion of stainless steels - Part 1: Austenitic and ferritaustenitic (duplex) stainless steels - corrosion test in nitric acid medium by measurement of loss in mass (Huey test)
<b>EN ISO 3651-2 Method A,B,C</b>	Determination of resistance to intergranular corrosion of stainless steels - Part 2: Ferritic, austenitic and ferritic - austenitic (duplex) stainless steels - corrosion test in media containing sulfuric acid
<b>EN ISO 15156-3</b>	Materials for use in H <sub>2</sub> S - containing environments in oil and gas production - Part 3: Cracking-resistant CRAs (corrosion-resistant alloys) and other alloys
<b>ASTM A262 Practice A,B,C,E,F</b>	Standard Practices for detecting susceptibility to intergranular attack in austenitic stainless steels
<b>ASTM A923 Method A,B,C</b>	Standard Test methods for detecting detrimental intermetallic phase in Duplex austenitic / ferritic stainless steels
<b>NACE MR 0103</b>	Materials resistant to sulfide cracking in the corrosive environment of refined petroleum
<b>NACE MR 0175</b>	Resistant metals to cracking and sulphide corrosion in acid oil environments

### QUALIFICATION

<b>System:</b>	ISO 9001:2015	Quality management systems
<b>Supplier accreditation basics:</b>	AD 2000 – Merkblatt W0 AD 2000 – Merkblatt W2 AD 2000 – Merkblatt W10 Pressure Equipment Directive 97/23/EC Lloyd's Register of Shipping (LR) Germanischer Lloyd (GL) Det Norske Veritas (DNV) NORSOK M-650	

### CERTIFICATE

EN 10204 metal products: control documents

<b>3.1</b>	Manufacturer inspection
<b>3.2</b>	Test report certified by a third party



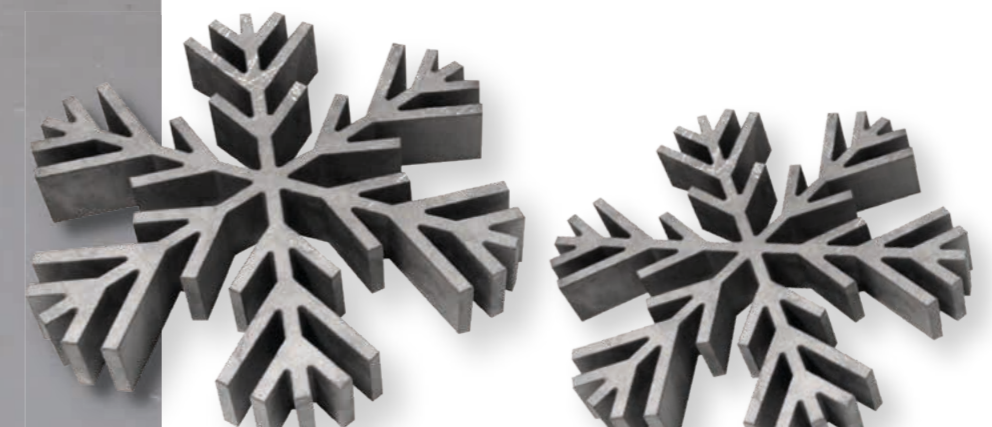
# WAREHOUSE



### Dimensions of plates:

Thickness (mm)	3-6	8-130
Width (mm)	max 2000	max 2500
Length (mm)	max 12000	max 12000
Weight (kg)	max 9600	max 9600

TYPE OF FINISHING AND SUPERFICIAL PRODUCT LAYER ACCORDING TO EN 10088-2, ASTM A480





## QUALITY



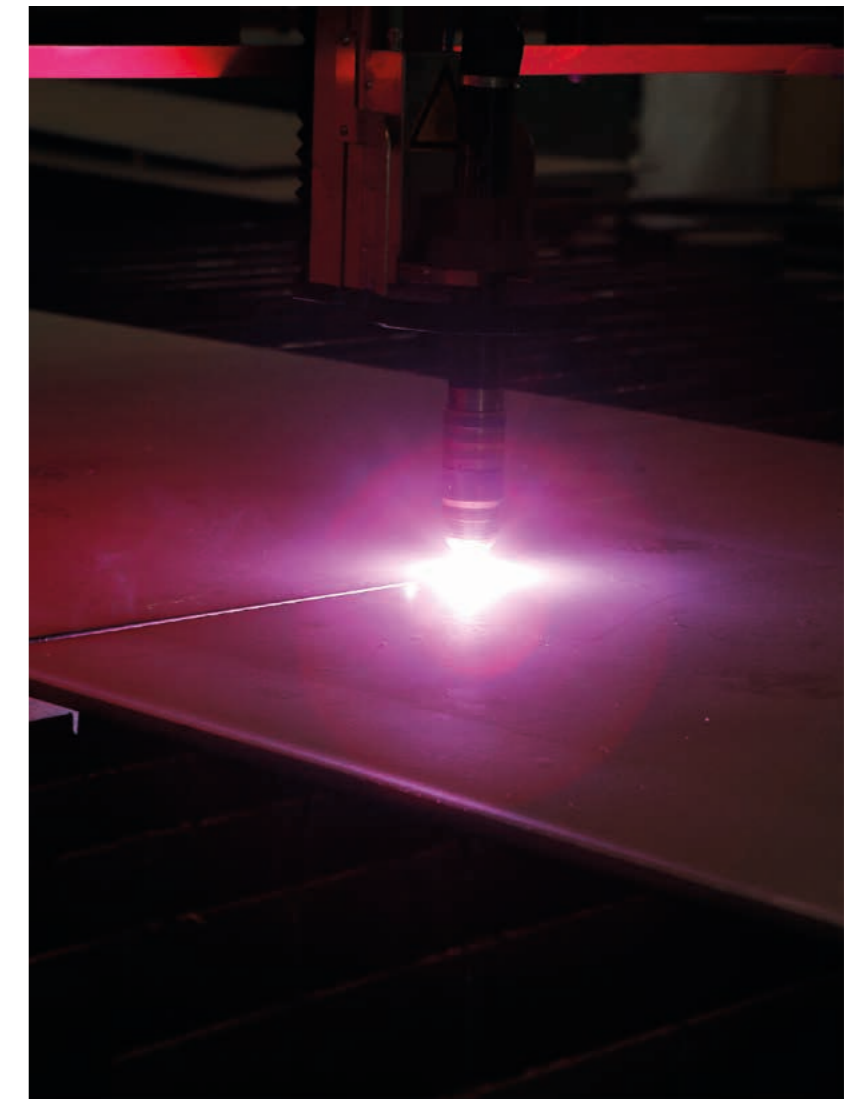
All production processes of SIJ | Griffon & Romano have been certified according to UNI EN ISO 9001 since 1996. All our products are identified and provided with certificates of origin. We can perform tests by the main accredited bodies such as RINA, DNV, LLOYD'S REGISTER, BUREAU VERITAS, TUV according to the regulations requested by the customer or by the bodies themselves.

### **MATERIAL ANALYSIS**

On the samples we supply to customers we carry out chemical analyses, mechanical tests, micrographs, macrographs and any other test applicable to sheet metal.

### **ULTRASOUND TESTING**

On request we carry out ultrasound control of the material according to the specifications requested by the customer.





## OUR STRATEGY



### MISSION

Our wide sales network, logistics capabilities and new management system, along with over 60 years market knowledge form the foundations of our customer service capabilities. Our personal approach, consultancy, training and customer support are an integral part of our daily work.

### TECHNICAL/COMMERCIAL ADVICE

Our highly trained technical personnel can assist the customer in every stage of the sale.

### WE GUARANTEE:

- Short lead time on processed material
- Fast and secure deliveries
- Quick response for all quotations
- Maximum precision of our products through the use of the most modern technologies
- After sales support
- Wide selection of stainless and special steels





**sij** | griffon &  
romano

S I J G R I F F O N & R O M A N O - 1 0 2 0 2 2 - E N

**SIJ Griffon & Romano**

**HEADQUARTES AND BRANCH:**

Via Dossetti, 11  
20066 Melzo (MI)  
T. +39 02 4407381  
F. +39 02 4406048

**BRANCH:**

Via G. Balla, 26  
42025 Corte Tegge (RE)  
T. +39 0522 946396  
F. +39 0522 946389

[info@griffon-romano.it](mailto:info@griffon-romano.it)  
[www.griffon-romano.it](http://www.griffon-romano.it)